



Description: Sirius or XM Audi Satellite receiver
Installation Instructions

Part Number: 8E0 035 593 A & 8E0 035 593

Fitment: TT Coupe

Application: 2005

Supplier: Delphi Automotive / Votex GmbH

Published date: Revision 1
08-20-04

Sections: Section 1 Installation
Section 2 Coding & Testing

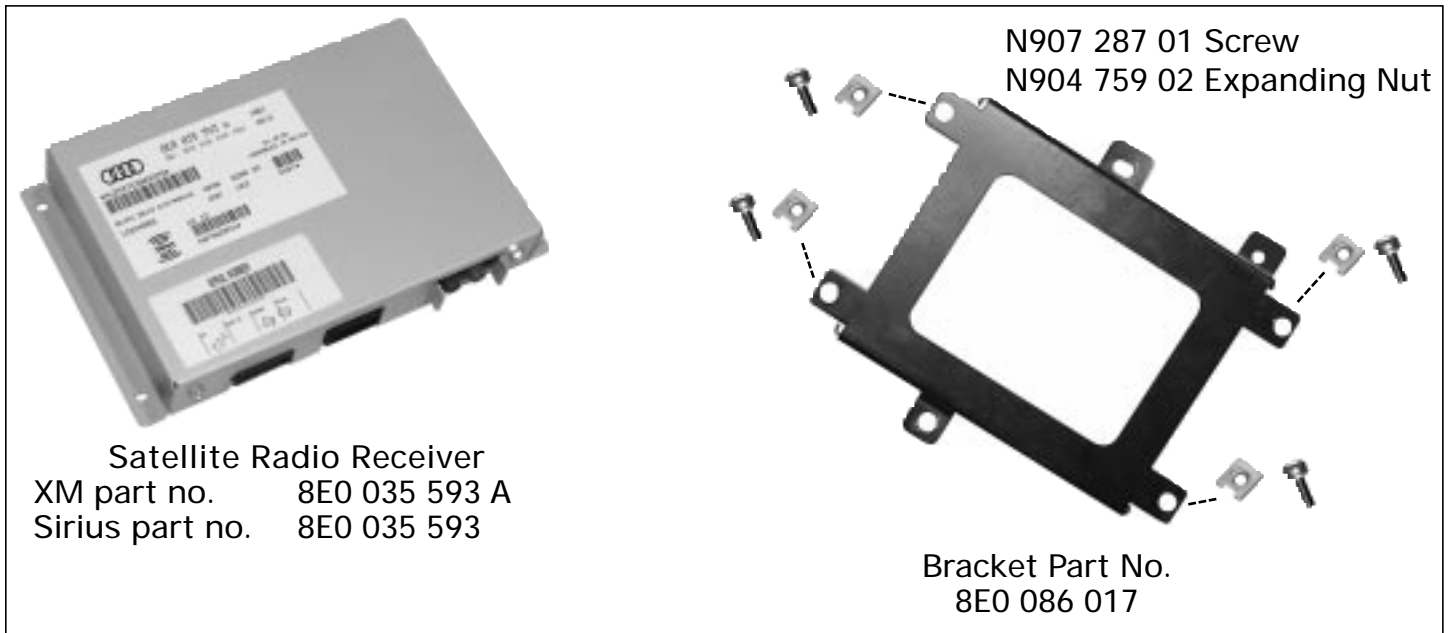
Attention! Make sure you maintain the vehicle in a clean pristine condition, and trim components are undamaged and placed back into position. Prior to reinstallation, make sure you vacuum the inside of the cover where dirt is apparent. Make sure that all dirt is removed from the inside of the cover. Always protect the rear bumpers, painted and interior surfaces, on all vehicles during the installation. Have a clean terry cloth and cleaning alcohol with you to clean off any fingerprints on the interior of the vehicles.



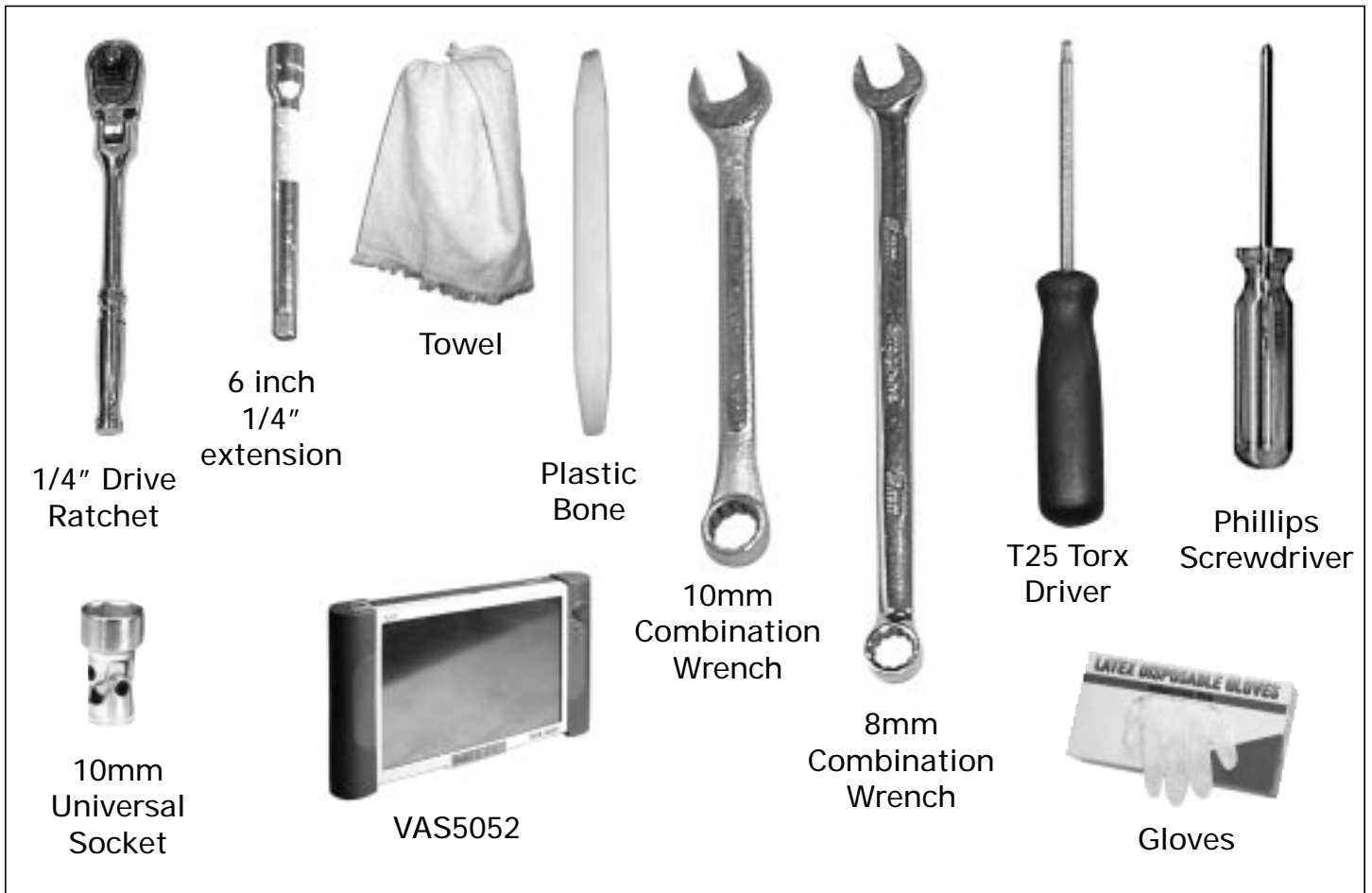
Part Number: 8E0 035 593 A / 8E0 035 593
Description: Sirius or XM
Satellite receiver

Supplier: Delphi Automotive / Votex GmbH
Fitments: TT Coupe 2005

XM Audi Satellite receiver installation kit.



Installation tools required.





Part Number: 8E0 035 593 A / 8E0 035 593
Description: Sirius or XM
Satellite receiver

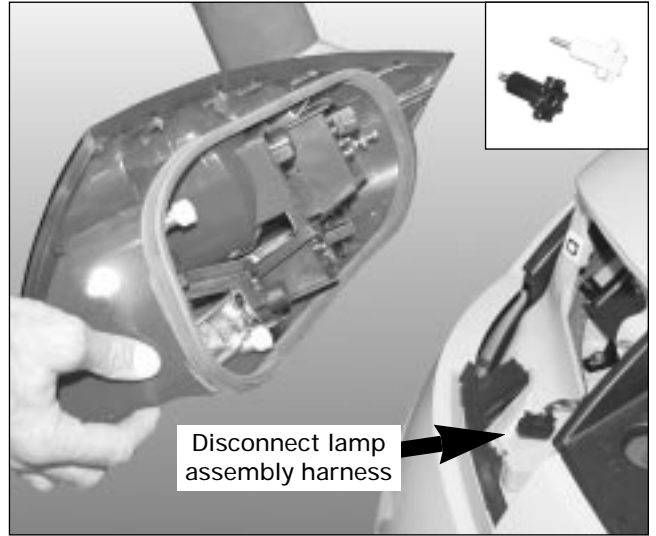
Supplier: Delphi Automotive / Votex GmbH
Fitments: TT Coupe 2005

XM or Sirius Audi Satellite receiver installation



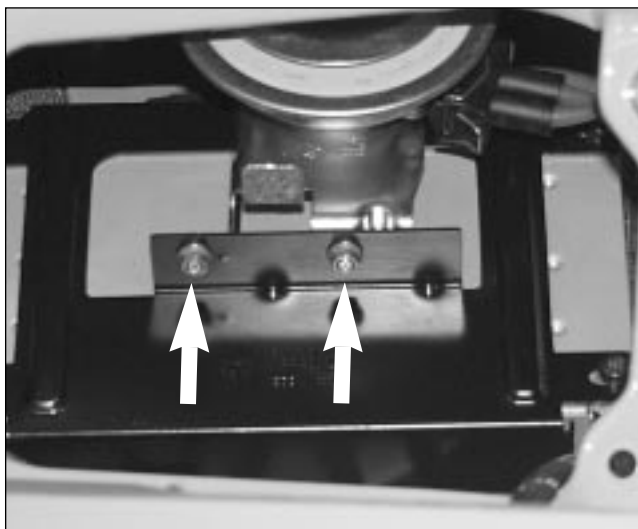
Step#01

Make sure ignition key is removed. Empty trunk of contents. Move luggage compartment floor assembly by folding forward to allow access to the driver's side fender panel.



Step#02

Remove the lamp assembly by removing (2) thumb wheel screws. After removal, partially pull the tail lamp assembly straight back. Upon removal, disconnect wiring harness and set lamp assembly aside in a safe location to prevent damage. Note: Placement of thumbwheel screws: White thumb wheel screw is at the top, the black one is inserted at the bottom.



Step#03

With the 8mm wrench, remove the alarm horn from the bracket, disconnect the wire harness, and set the screws and horn aside for reinstallation later.



Step#3A

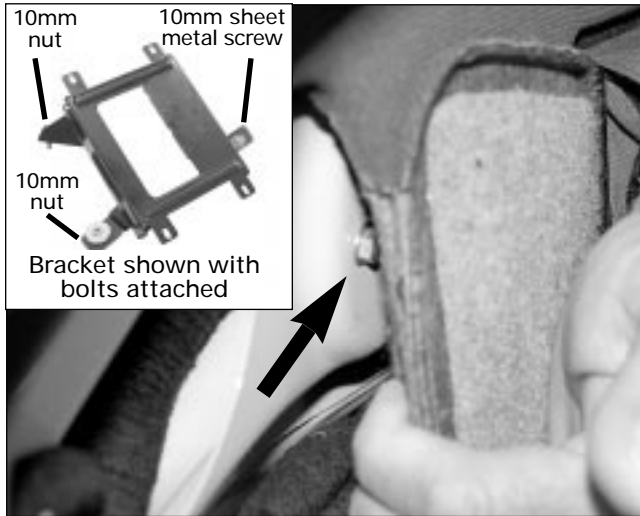
With the 10mm wrench or 1/4" drive ratchet with 10mm universal, remove the first sheet metal screw from the bracket and set it aside. Note: There are two additional fasteners securing the bracket.



Part Number: 8E0 035 593 A / 8E0 035 593
 Description: Sirius or XM
 Satellite receiver

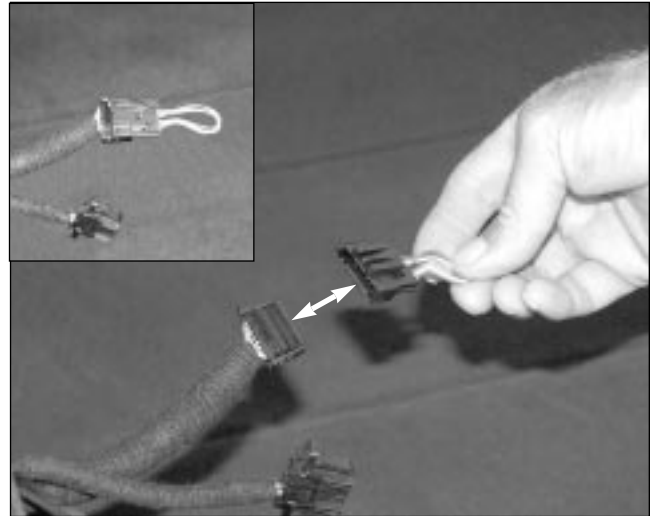
Supplier: Delphi Automotive / Votex GmbH
 Fitments: TT Coupe 2005

XM or Sirius Audi Satellite receiver installation



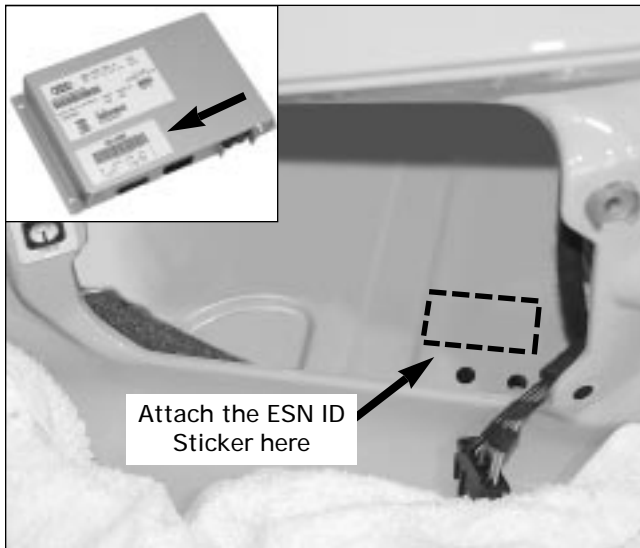
Step#3B

With the 10mm wrench, remove the second and third 10mm nuts, and set them aside. Remove the bracket from the fender well through the tail lamp opening.



Step#04

Locate the SAT wiring harness in the rear fender well (taped in foam). Remove the foam, and route through the access panel. Locate the by-pass loop as shown. Remove by-pass loop and discard.



Step#05

Remove ESN ID sticker from the back of satellite radio receiver and attach it to the area shown in the tail lamp access. Remove second label, to be attached to the VAS 5052 printout after completion.



Step#06

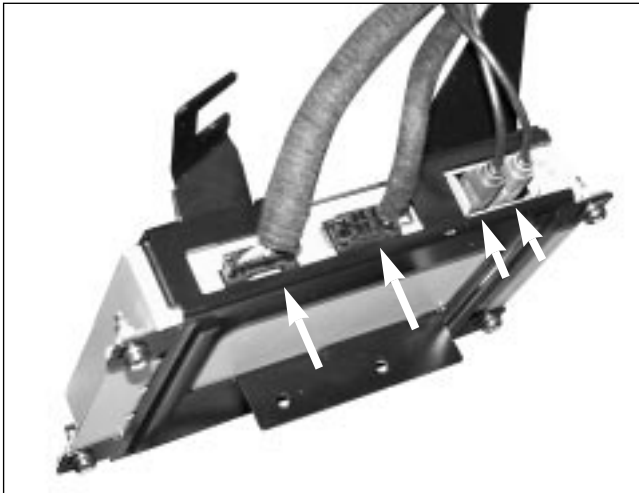
Attach satellite radio receiver unit to bracket using 4 threaded clips and mounting screws. Note: The threaded clips attach to the Satellite receiver underneath the bracket. Torque to 3Nm.



Part Number: 8E0 035 593 A / 8E0 035 593
Description: Sirius or XM
Satellite receiver

Supplier: Delphi Automotive / Votex GmbH
Fitments: TT Coupe 2005

XM or Sirius Audi Satellite receiver installation



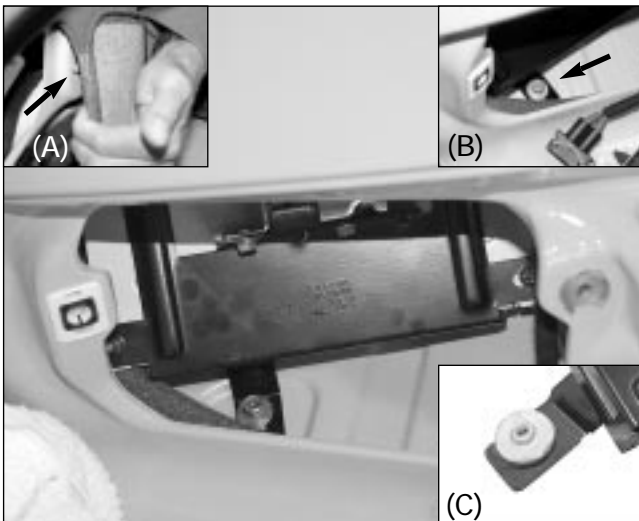
Step#07

Locate the pre-wired satellite radio harness (4 connectors) in the rear fender well. Plug the connectors into the receiver through the tail lamp access hole.



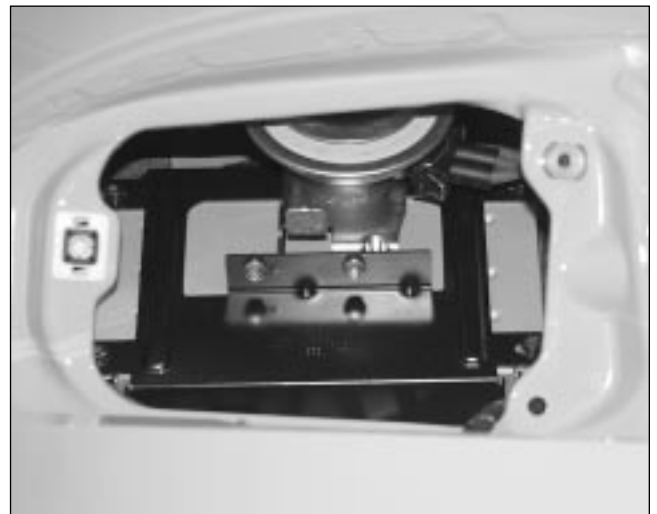
Step#08

Caution: Carefully insert SAT receiver assembly in place to avoid any paint damage.



Step#09

1. When installing the bracket assembly, first insert the right mounting stud through the outer panel (insert A). Do not tighten at this time.
2. Insert sheet metal screw (10mm) into mounting hole (insert B).
3. Position captured nut/washer on attaching stud. Tighten to 3.5 Nm. Tighten remaining fasteners to 3.5Nm (insert C).



Step#10

Insert horn by reinstalling two 8mm screws and torque to 4Nm. Attach wiring harness to horn.



Part Number: 8E0 035 593 A / 8E0 035 593
Description: Sirius or XM
Satellite receiver

Supplier: Delphi Automotive / Votex GmbH
Fitments: TT Coupe 2005

XM or Sirius Audi Satellite receiver installation



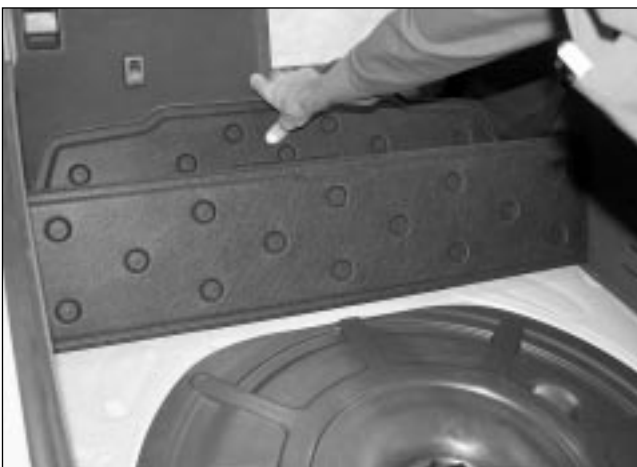
Step#11

Route wiring harness along side bracket and ensure that harness is not too taut against sharp edges to prevent chafing of harness.



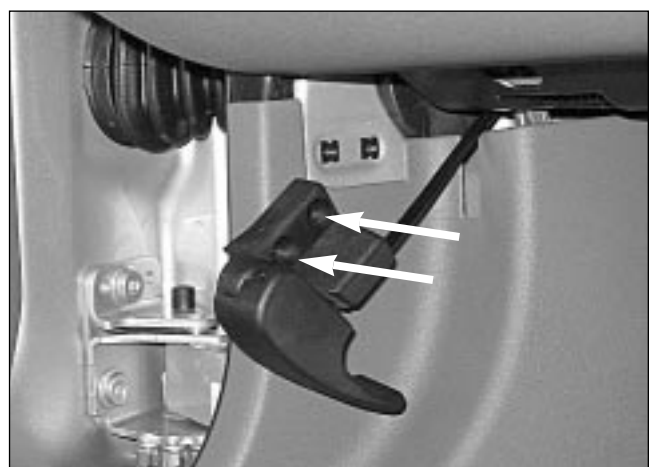
Step#12 Installing tail lamp assembly.

Connect the wiring harness to the tail lamp assembly. Position tail lamp so that the tail lamp position stud aligns with plastic retainer. Push in gently. From the inside of the panel, insert the white thumb wheel (top) screw first. Do not tighten at this time. Insert the black thumb wheel screw (bottom) and securely tighten. Go back to the upper thumb wheel screw (white) and tighten securely. Ensure that the tail lamp assembly is aligned correctly.



Step#13

Close access panel, reposition luggage compartment floor. Vacuum if necessary.



Step#14

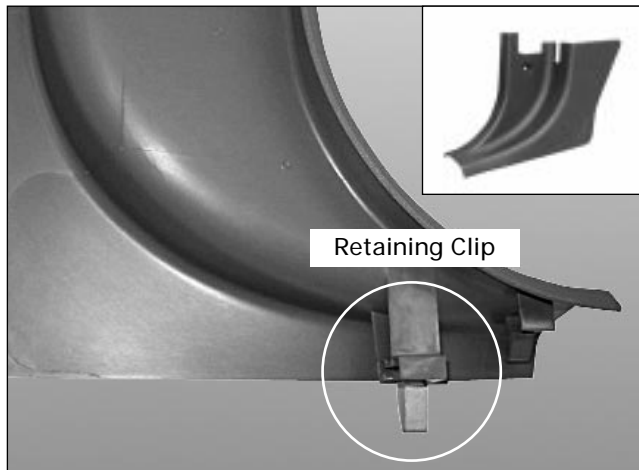
Remove hood release handle by removing two Phillips screws.



Part Number: 8E0 035 593 A / 8E0 035 593
Description: Sirius or XM
Satellite receiver

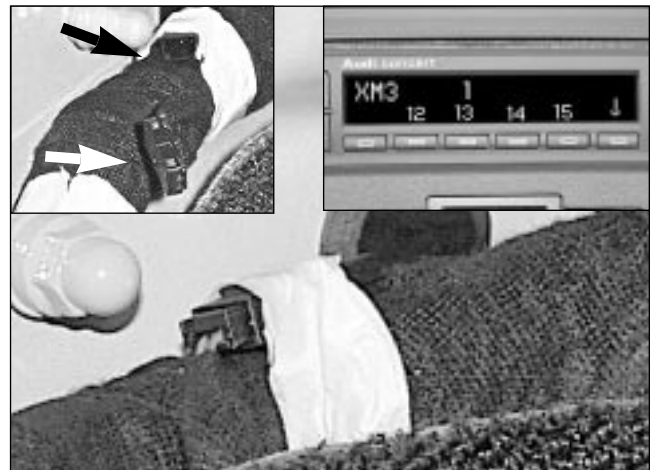
Supplier: Delphi Automotive / Votex GmbH
Fitments: TT Coupe 2005

XM or Sirius Audi Satellite receiver installation



Step#15

Remove left kick panel by removing torx fastener (T25) and by using a trim tool under the edge near the door sill trim. Pull straight up to unseat retaining clip. Place panel in a safe location to prevent damage.



Step#16

Locate CAN connector at wiring harness and connect them together.

Note: Remove tape carefully to avoid damage to wiring.

Note: Before reinstalling left kick panel and after connecting CAN connector, turn on the radio, press SAT button to ensure satellite connectivity (provided that the radio is taken out of transport mode).

Reinstall panel per Step#17.



Step#17

Reinstall left kick panel and tighten fastener to 3.5Nm. Attach hood release cable and tighten screws to 4.0Nm. Ensure that the kick panel is aligned with the lower door sill plate and the weatherstrip is correctly seated.



Description: **Sirius or XM Audi Satellite receiver
Installation Instructions**

Part Number: **8E0 035 593 A & 8E0 035 593**

Fitment: **TT Coupe**

Application: **2005**

Supplier: **Delphi Automotive / Votex GmbH**

Published date: **Revision 1
08-20-04**

Sections: **Section 2 Coding & Testing**



Part Number: 8E0 035 593 A / 8E0 035 593
 Description: Sirius or XM
 Satellite receiver

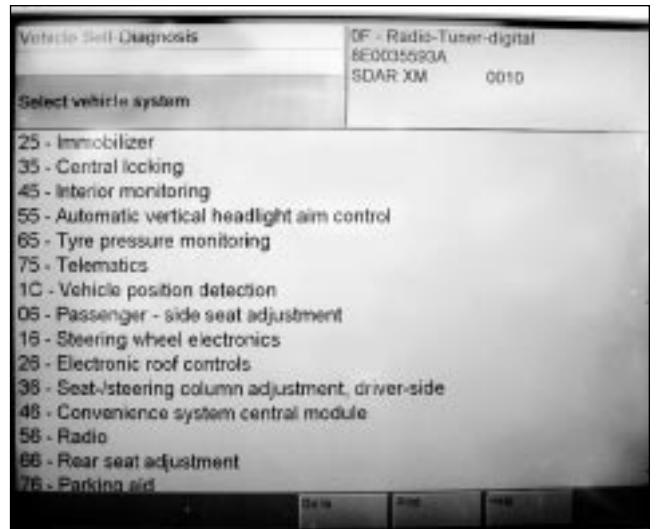
Supplier: Delphi Automotive / Votex GmbH
 Fitments: TT Coupe 2005

XM or Sirius Audi Satellite receiver installation



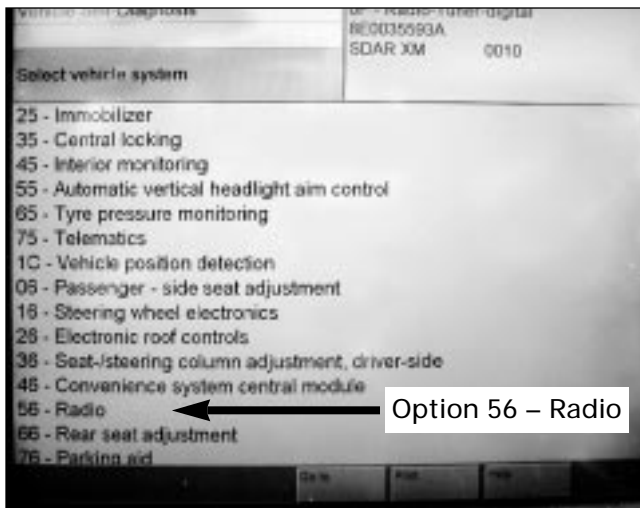
Step#18 Testing SAT tuner

For these following steps, you will need to use a VAS5052 scan tool. Drive the car outside, ensure a clear view of the sky. Turn the radio on. The radio should say "transport".



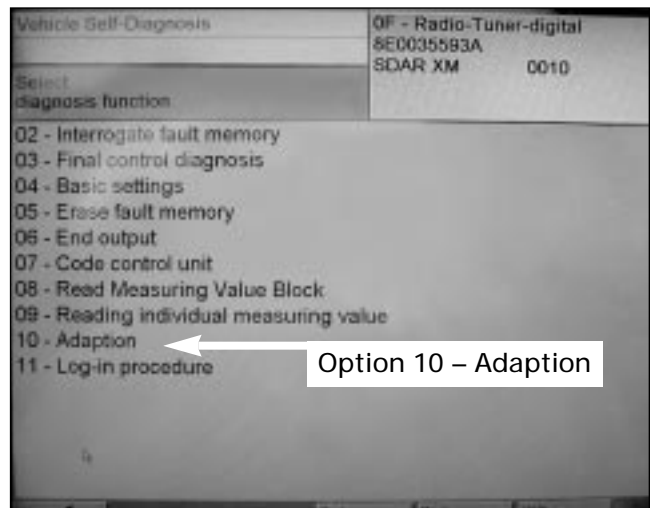
Step#19

Plug in the VAS5052 scan tool.



Step#20

Select option 56–radio.



Step#21

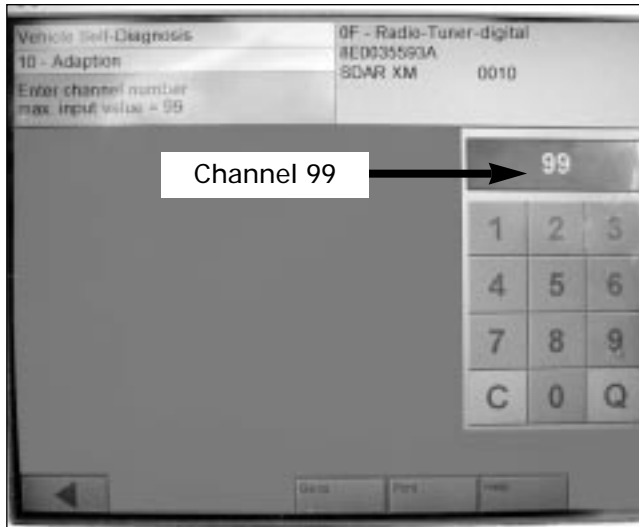
Select option 10–adaption.



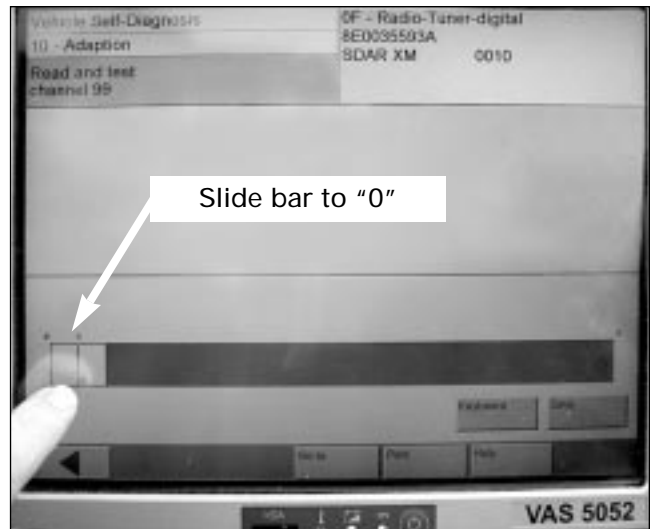
Part Number: 8E0 035 593 A / 8E0 035 593
Description: Sirius or XM
Satellite receiver

Supplier: Delphi Automotive / Votex GmbH
Fitments: TT Coupe 2005

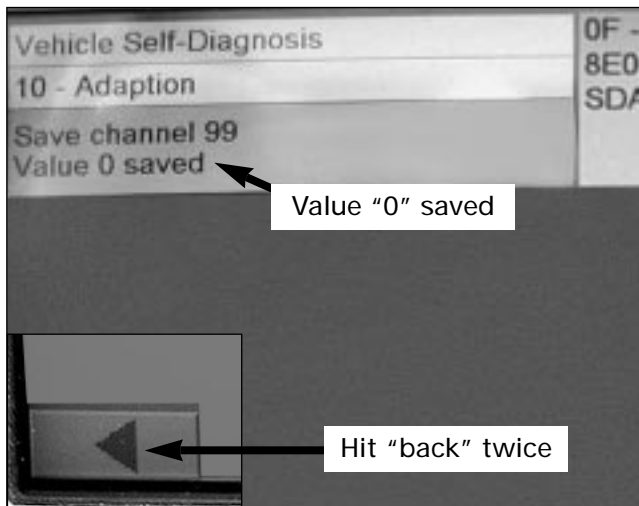
XM or Sirius Audi Satellite receiver installation



Step#22
Enter channel number 99.



Step#23
It will show «1». Slide bar to «0».
⚠ It is important to «Save Settings».



Step#24
Display will say "Value «0» saved".
Hit back twice, radio will now operate.



Step#25
Hit the «SAT» button. If the words "No SAT Radio" appear, then:
A.) Check the CAN BUS connection;
B.) Check all the connections and wires;
C.) If all the connectors appear to be in the correct position, and the radio display still shows "No SAT Radio", replace the receiver and attempt the test again.



Part Number: 8E0 035 593 A / 8E0 035 593
 Description: Sirius or XM
 Satellite receiver

Supplier: Delphi Automotive / Votex GmbH
 Fitments: TT Coupe 2005

XM or Sirius Audi Satellite receiver installation



Step#22A

If the receiver and installation worked properly, you will start hearing samplings of XM or Sirius radio.



Step#23

You must now return the car to transport mode. On the VAS5052 scan tool:

- 1.) Select Option 56-Radio;
 - 2.) Select Option 10-Adaption;
 - 3.) Select channel number 99;
 - 4.) Move bar from «0» to «1».
- ⚠ Save Settings. Display will now say "Value 1 Saved". Hit back twice. Radio will again show transport.

<div style="display: flex; flex-direction: column; align-items: center;"> <div style="display: flex; align-items: center; margin-bottom: 20px;"> <div style="text-align: center;"> <p>XM ID</p> <p>*12345678*</p> </div> </div> <div style="display: flex; align-items: center;"> <div style="text-align: center;"> <p>Sirius ID</p> <p>*123456789012*</p> </div> </div> </div>	<table border="1" style="width: 100%; border-collapse: collapse;"> <tr> <td style="width: 70%;">Vehicle Self-Diagnosis</td> <td style="width: 30%;">0F - Radio-Tuner-digital</td> </tr> <tr> <td></td> <td>8E0035593A</td> </tr> <tr> <td></td> <td>SDAR XM 0010</td> </tr> <tr> <td>Select diagnosis function</td> <td></td> </tr> <tr> <td>02 - Interrogate fault memory</td> <td></td> </tr> <tr> <td>03 - Final control diagnosis</td> <td></td> </tr> <tr> <td>04 - Basic settings</td> <td></td> </tr> <tr> <td>05 - Erase fault memory</td> <td></td> </tr> <tr> <td>06 - End output</td> <td></td> </tr> <tr> <td>07 - Code control unit</td> <td></td> </tr> <tr> <td>08 - Read Measuring Value Block</td> <td></td> </tr> <tr> <td>09 - Reading individual measuring value</td> <td></td> </tr> <tr> <td>10 - Adaption</td> <td></td> </tr> <tr> <td>11 - Log-in procedure</td> <td></td> </tr> </table> <div style="text-align: center; margin-top: 10px;"> </div>	Vehicle Self-Diagnosis	0F - Radio-Tuner-digital		8E0035593A		SDAR XM 0010	Select diagnosis function		02 - Interrogate fault memory		03 - Final control diagnosis		04 - Basic settings		05 - Erase fault memory		06 - End output		07 - Code control unit		08 - Read Measuring Value Block		09 - Reading individual measuring value		10 - Adaption		11 - Log-in procedure	
Vehicle Self-Diagnosis	0F - Radio-Tuner-digital																												
	8E0035593A																												
	SDAR XM 0010																												
Select diagnosis function																													
02 - Interrogate fault memory																													
03 - Final control diagnosis																													
04 - Basic settings																													
05 - Erase fault memory																													
06 - End output																													
07 - Code control unit																													
08 - Read Measuring Value Block																													
09 - Reading individual measuring value																													
10 - Adaption																													
11 - Log-in procedure																													

Step#24

Install ESN sticker to VAS 5052 printout and place in glove compartment. If an ESN/ID sticker is not available, record the ESN/ID number on a soft pressure label and stick it on the printout.

This text block must appear in VAS 5052 to authenticate connectivity of SAT receiver. Check for any DTC's. The installation is now complete.