



Description **Sirius or XM Audi Satellite receiver
Installation Instructions**

Part Number **4E0 057 593 and 4E0 057 593 A**

| Fitment | Description | Application |
|----------------|-------------|-------------|
| | A8 L | 2004> |

Supplier **Delphi Automotive / Votex GmbH**

Published date: **Revision 1
02-16-04**

Sections: **Section 1 Installation
Section 2 Coding–2004 A8 L Only
Section 3 Coding–2005> A8 L**

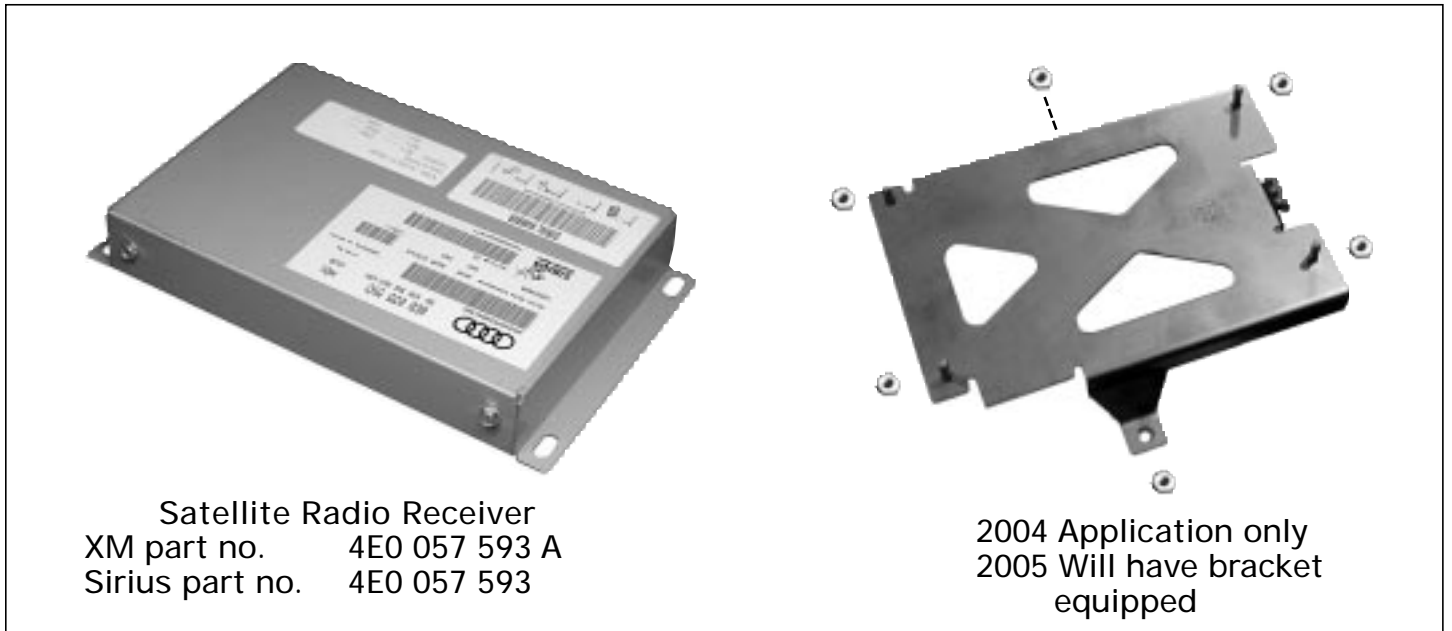
Attention! Before starting, make sure painted surfaces are protected to avoid scratching during installation process and during the manipulation of the receiver and bracket.



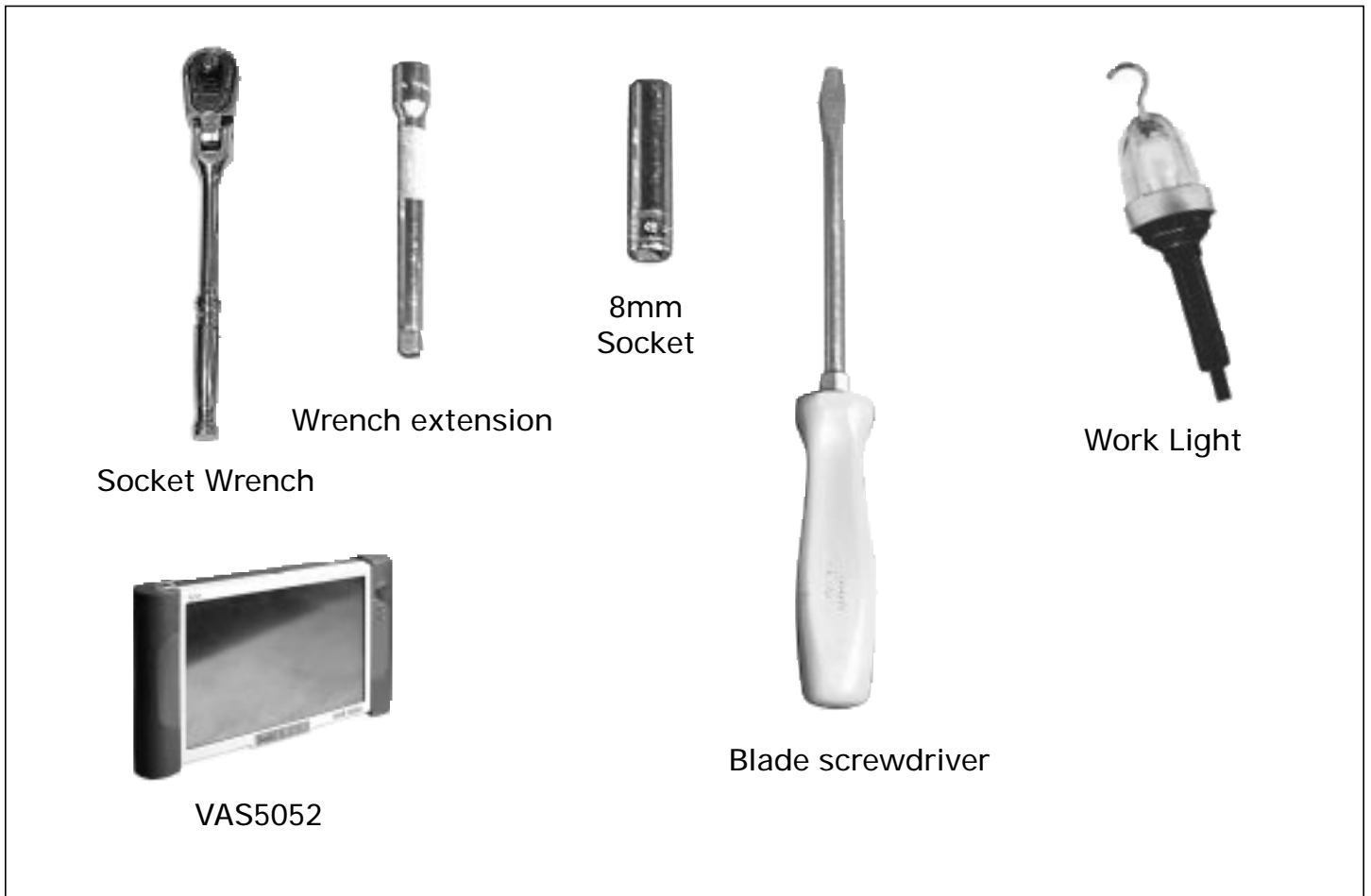
Part Number: 4E0 057 593/4E0 057 593 A
Description: Sirius or XM
Satellite receiver

Supplier: Delphi Automotive / Votex GmbH
Fitments: A8 L 04>

XM or Sirius Audi Satellite receiver installation kit.



Installation tools required.

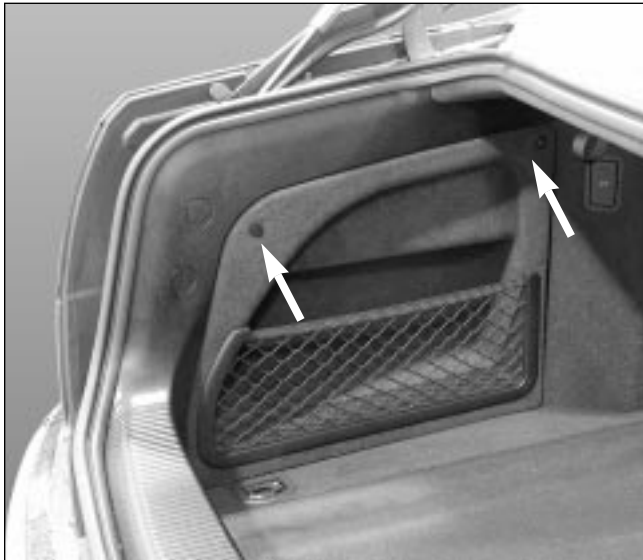




Part Number: 4E0 057 593/4E0 057 593 A
Description: Sirius or XM
Satellite receiver

Supplier: Delphi Automotive / Votex GmbH
Fitments: A8 L 04>

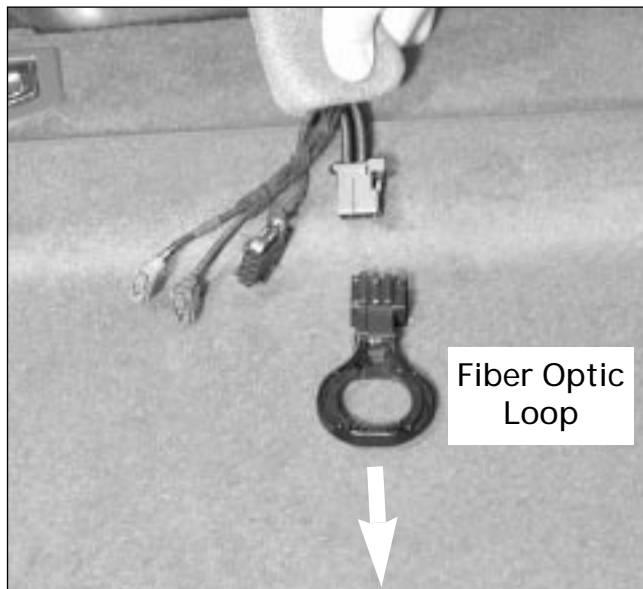
XM or Sirius Audi Satellite receiver installation



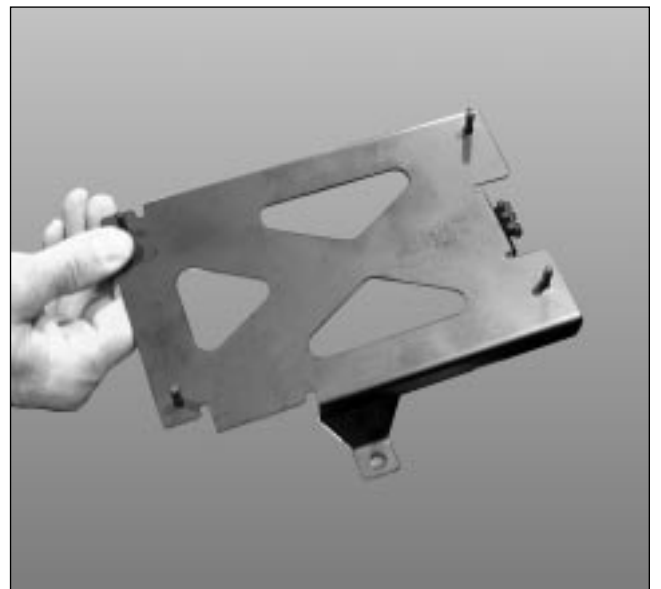
Step#1
Turn screws 90° counterclockwise to remove side panel.



Step#2
Locate satellite wiring harness bundle. A foam cover is over the connectors and the fiber optic loop. Remove protective foam and separate wires.



Step#3
Remove fiber optic loop from harness.



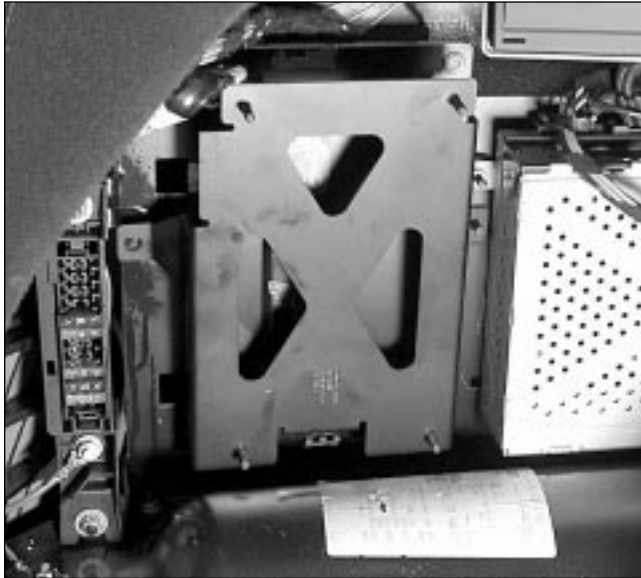
Step#4
Mounting bracket 4E0 051 517
(2004 applications only).



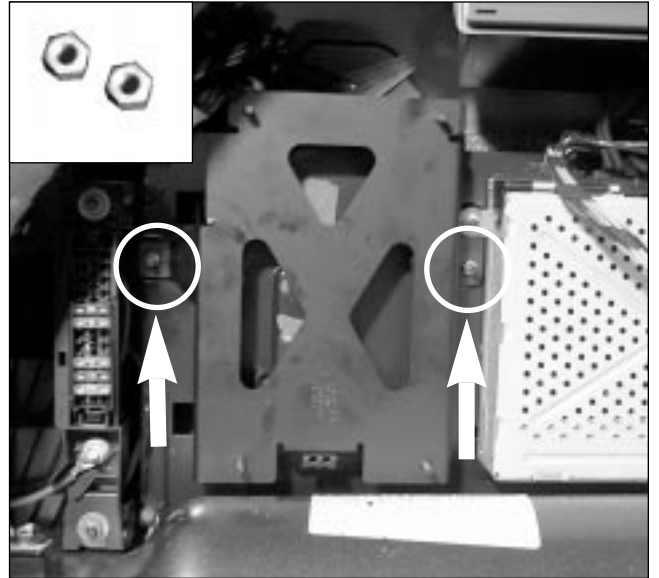
Part Number: 4E0 057 593/4E0 057 593 A
Description: Sirius or XM
Satellite receiver

Supplier: Delphi Automotive / Votex GmbH
Fitments: A8 L 04>

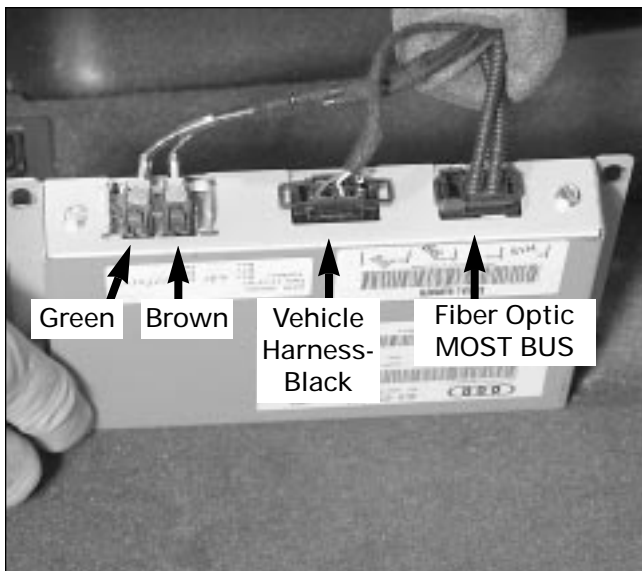
XM or Sirius Audi Satellite receiver installation



Step#5
Install bracket as shown.
(2004 Applications only).



Step#6
Install 2 self locking nuts–torque to 3Nm.
(2004 Applications only).



Step#7
Attach wiring harness connections as shown.



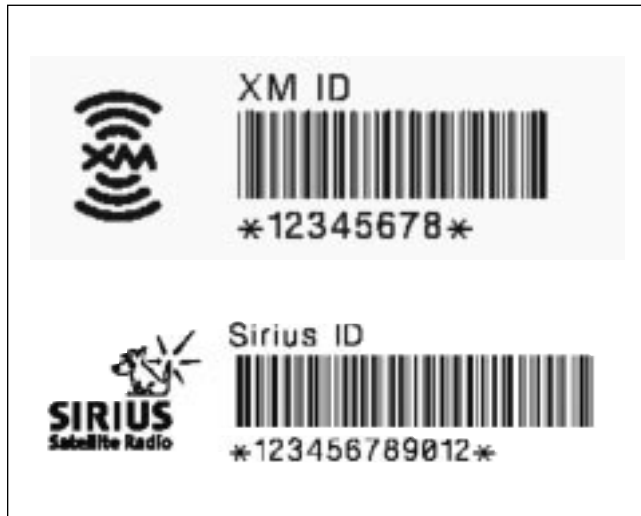
Step#8
Attach Satellite Radio Receiver unit to bracket using 4 self locking nuts. Torque to 3 Nm. Ensure that all wires are routed properly to prevent damage to wiring and the fiber optic cable.



Part Number: 4E0 057 593/4E0 057 593 A
Description: Sirius or XM
Satellite receiver

Supplier: Delphi Automotive / Votex GmbH
Fitments: A8 L 04>

XM or Sirius Audi Satellite receiver installation



Step#9

Locate XM/Sirius ESN/ID sticker. Remove 1 label and place it on the inside of the left rear storage compartment door. If an ESN/ID sticker is not available, record the ESN/ID number on a soft pressure label and stick it on the inside of the rear left storage compartment door.



Step#10

Turn retaining screws 90° clockwise to secure side panel after installation.



Description **Sirius or XM Audi Satellite receiver
Installation Instructions**

Part Number **4E0 057 593 and 4E0 057 593 A**

| Fitment | Description | Application |
|----------------|-------------|-------------|
| | A8 L | 2004> |

Supplier **Delphi Automotive / Votex GmbH**

Published date: **Revision 1
02-16-04**

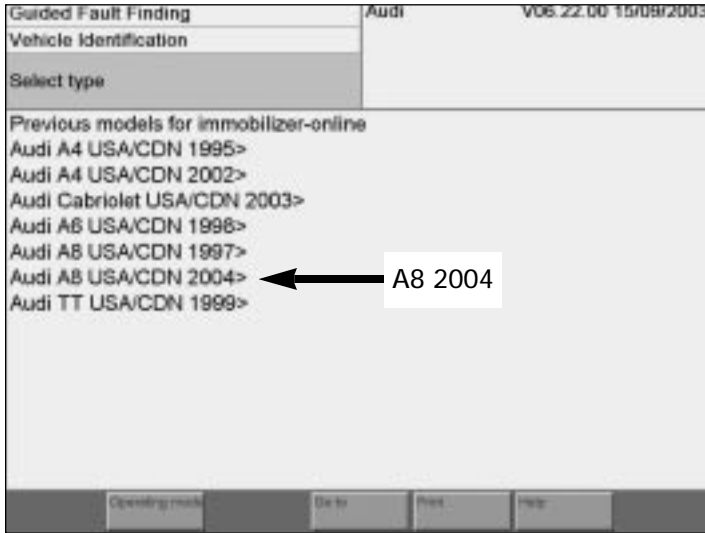
Sections: **Section 2 Coding–2004 A8 L Only**



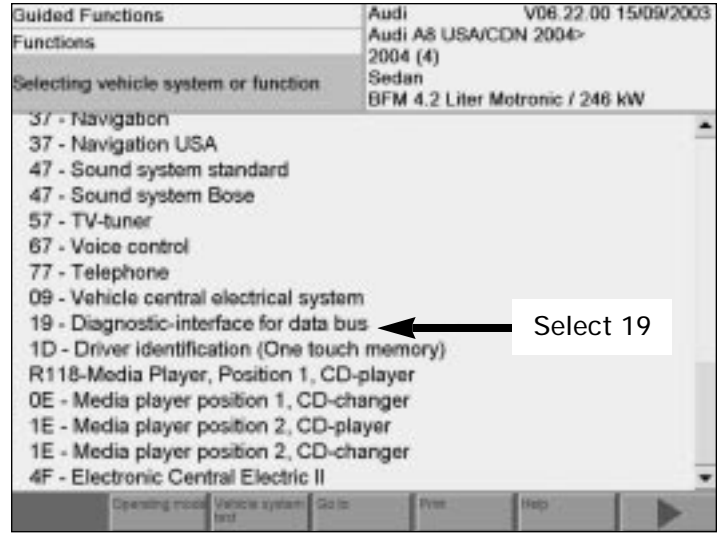
Part Number: 4E0 057 593/4E0 057 593 A
 Description: Sirius or XM
 Satellite receiver

Supplier: Delphi Automotive / Votex GmbH
 Fitments: A8 L 04>

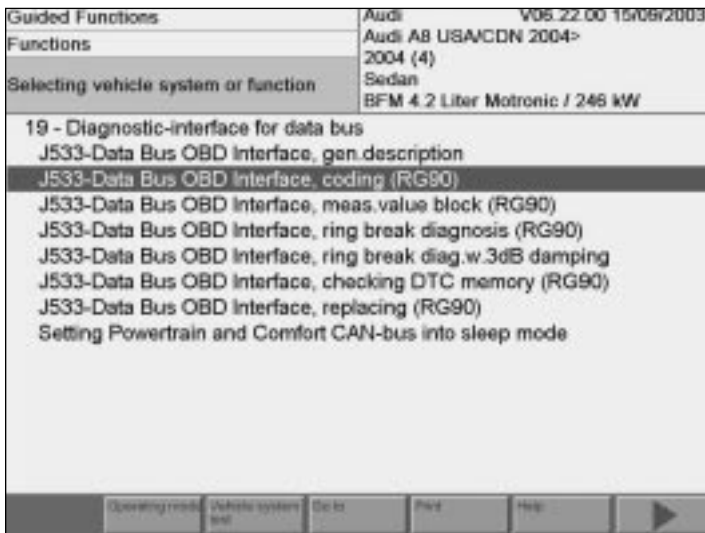
XM or Sirius Audi Satellite receiver installation–2004 coding.



Step#11
 Select A8 2004.



Step#12
 Select Address 19, Diagnostic Interface for data bus.



Step#13
 Select highlighted function,
 J533–Data Bus OBD Interface, Coding



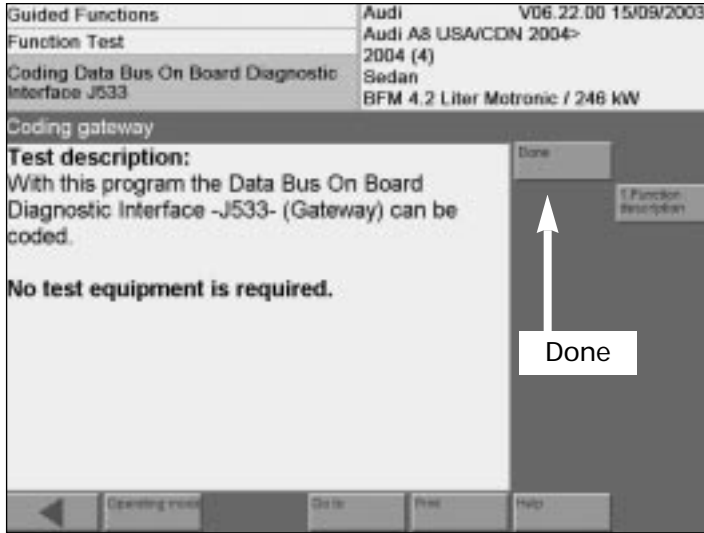
Step#14
 Select continue.



Part Number: 4E0 057 593/4E0 057 593 A
 Description: Sirius or XM
 Satellite receiver

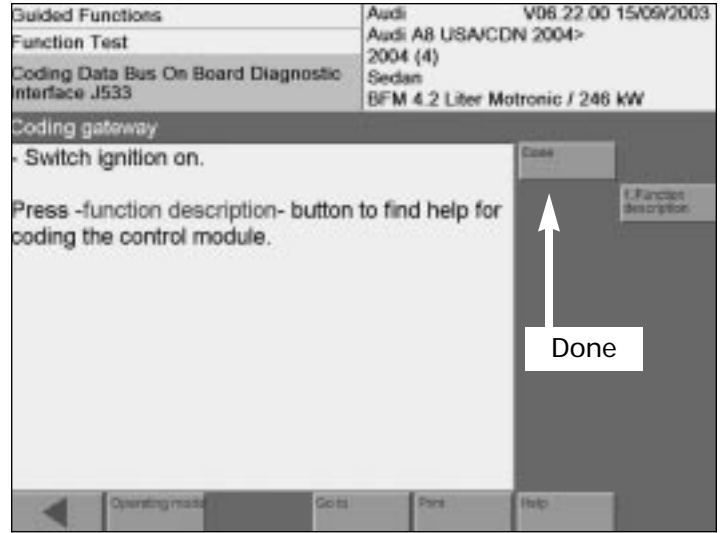
Supplier: Delphi Automotive / Votex GmbH
 Fitments: A8 L 04>

XM or Sirius Audi Satellite receiver installation–2004 coding.



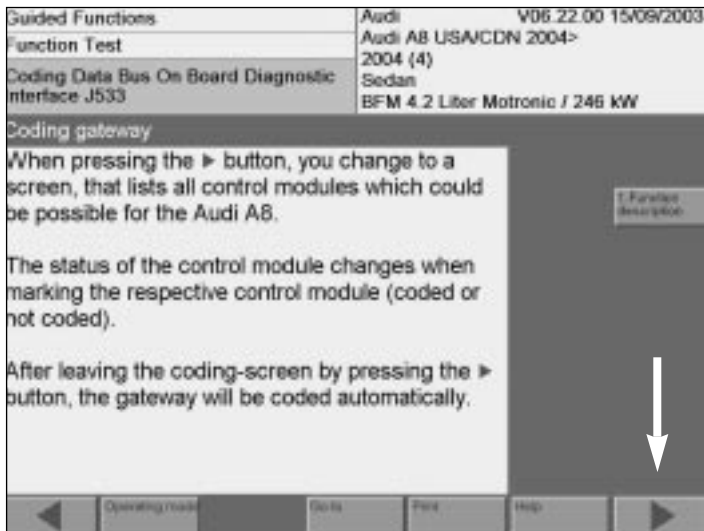
Step#15

Follow the test instructions as shown on the screen. Select Done.



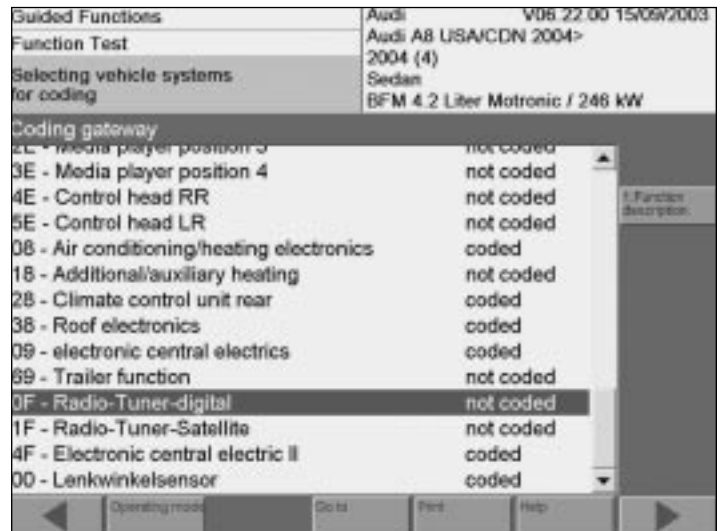
Step#16

Select Done.



Step#17

Select right arrow button to continue.



Step#18

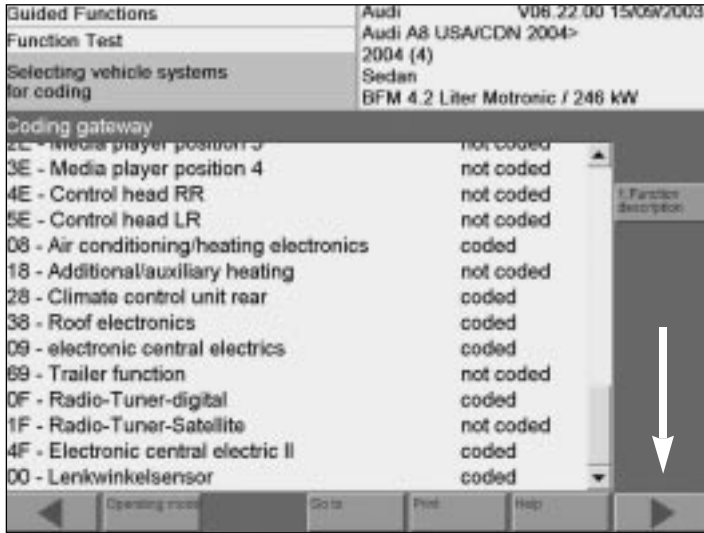
Scroll down to OF and select.
 Note: DO NOT select IF. The words "not coded" should change to "coded".



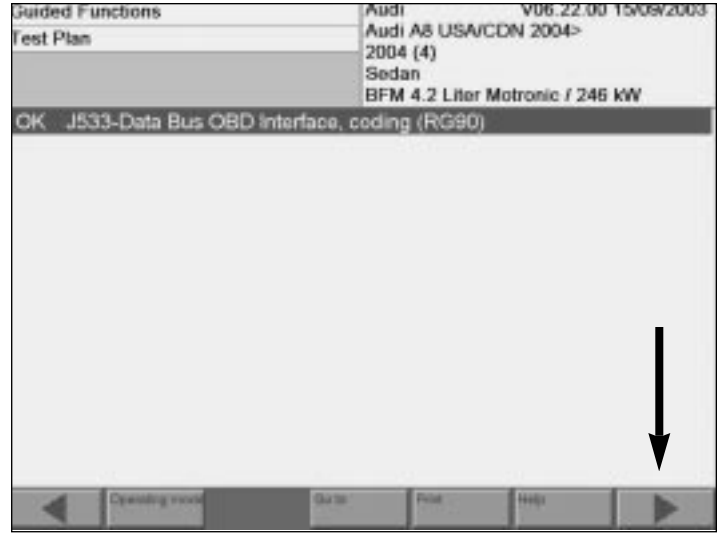
Part Number: 4E0 057 593/4E0 057 593 A
 Description: Sirius or XM
 Satellite receiver

Supplier: Delphi Automotive / Votex GmbH
 Fitments: A8 L 04>

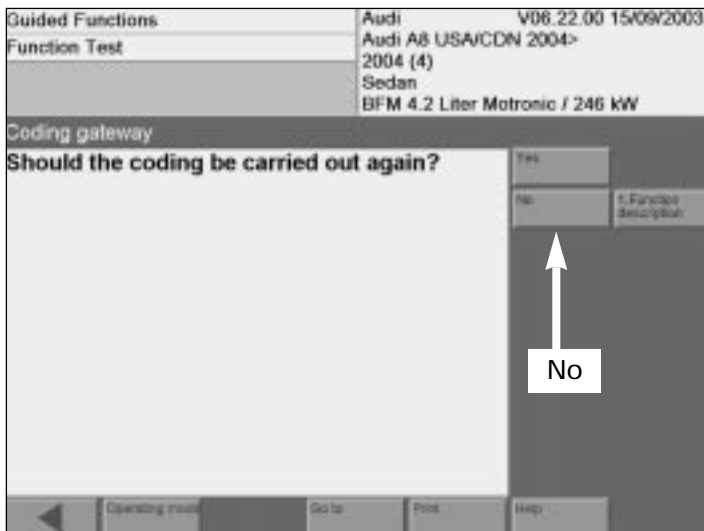
XM or Sirius Audi Satellite receiver installation–2004 coding.



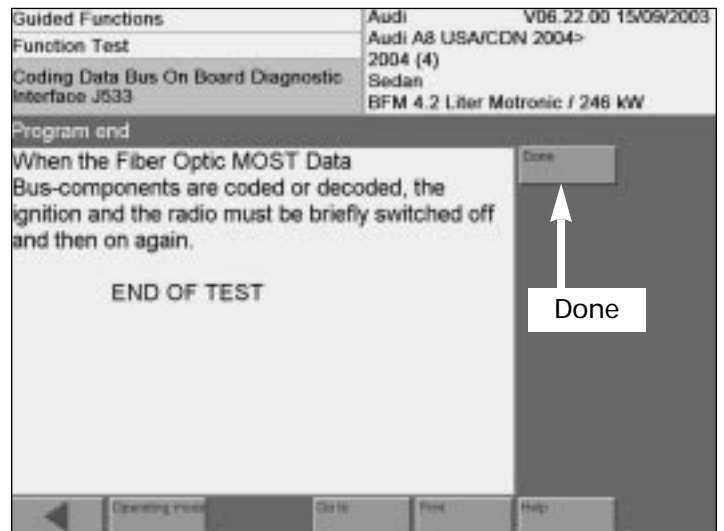
Step#19
 OF is now coded.
 Select continue.



Step#20
 Function is executed. The display should read OK J533-Data Bus OBD.
 Select continue.



Step#21
 Select NO.



Step#22
 Follow screen instructions.
 Program End.
 Select Done.



Part Number: 4E0 057 593/4E0 057 593 A
Description: Sirius or XM
Satellite receiver

Supplier: Delphi Automotive / Votex GmbH
Fitments: A8 L 04>

XM or Sirius Audi Satellite receiver installation–2004 coding.



Step#23 To check Satellite connectivity

Start engine. Turn on radio.

Press top right soft key on the MMI button panel to select "Band". The satellite provider should be displayed in the list. Rotate the MMI control knob and select Satellite Radio. If the installation was successful, you should hear the preview channels. (Be sure the vehicle is outside to get proper reception.)